



US007495970B1

(12) **United States Patent**
Tang et al.

(10) **Patent No.:** **US 7,495,970 B1**
(45) **Date of Patent:** **Feb. 24, 2009**

(54) **FLEXIBLE MEMORY ARCHITECTURES FOR PROGRAMMABLE LOGIC DEVICES**

(75) Inventors: **Howard Tang**, San Jose, CA (US);
Fabiano Fontana, San Jose, CA (US);
David L. Rutledge, Hillsboro, OR (US);
Om P. Agrawal, Los Altos, CA (US);
Henry Law, Los Altos, CA (US)

(73) Assignee: **Lattice Semiconductor Corporation**,
Hillsboro, OR (US)

(*) Notice: Subject to any disclaimer, the term of this patent is extended or adjusted under 35 U.S.C. 154(b) by 323 days.

(21) Appl. No.: **11/446,309**

(22) Filed: **Jun. 2, 2006**

(51) **Int. Cl.**
G11C 7/10 (2006.01)

(52) **U.S. Cl.** **365/189.08**; 326/39; 365/189.2

(58) **Field of Classification Search** 326/38, 326/39, 41; 365/189.08, 189.2
See application file for complete search history.

(56) **References Cited**

U.S. PATENT DOCUMENTS

5,548,228	A	8/1996	Madurawe
5,640,107	A	6/1997	Kruse
5,689,516	A	11/1997	Mack et al.
5,696,455	A	12/1997	Madurawe
5,794,033	A	8/1998	Aldebert
6,038,185	A	3/2000	Ng
6,044,025	A	3/2000	Lawman
6,049,222	A	4/2000	Lawman
6,150,837	A	11/2000	Beal et al.
6,304,099	B1	10/2001	Tang et al.
6,356,107	B1	3/2002	Tang et al.
6,467,009	B1	10/2002	Winegarden et al.

6,483,342	B2	11/2002	Britton et al.
6,507,214	B1	1/2003	Snyder
6,538,468	B1	3/2003	Moore
6,564,285	B1	5/2003	Mills
6,704,850	B1	3/2004	Reynolds
6,714,041	B1	3/2004	Darling et al.
6,721,840	B1	4/2004	Allegrucci
6,732,263	B1	5/2004	May et al.
6,772,230	B2	8/2004	Chen et al.
6,774,668	B1	8/2004	Wirtz, II
6,785,165	B2	8/2004	Kawahara
6,828,823	B1	12/2004	Tsui et al.
6,851,047	B1	12/2004	Tsui et al.
6,873,177	B1	3/2005	Wennekamp et al.
6,903,574	B2	6/2005	Chen et al.
7,088,132	B1	8/2006	Tang et al.
7,095,247	B1	8/2006	Tang et al.

(Continued)

OTHER PUBLICATIONS

U.S. Appl. No. 11/397,985, Fontana.

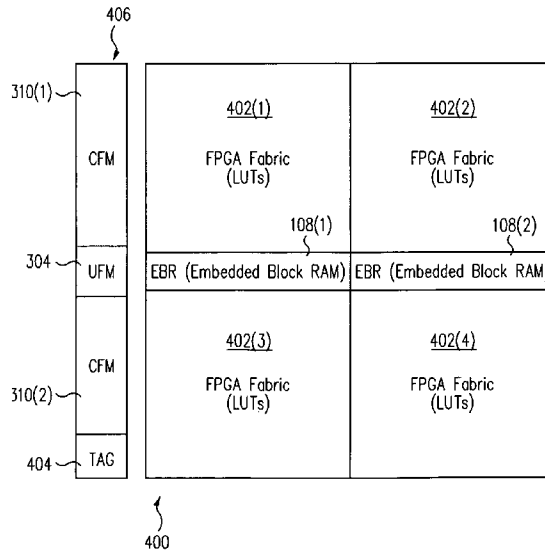
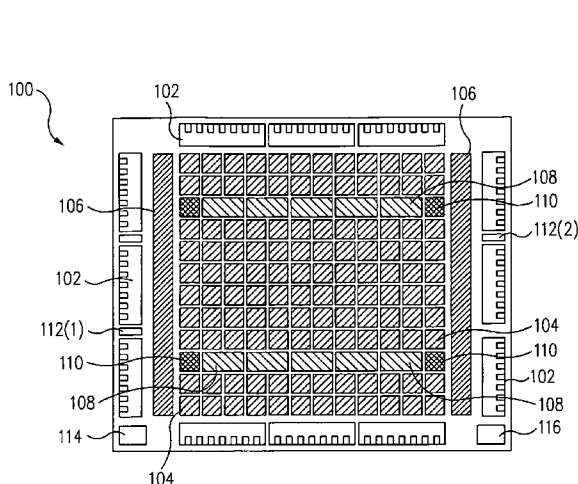
(Continued)

Primary Examiner—Van Thu Nguyen
Assistant Examiner—Alexander Sofocleous
(74) *Attorney, Agent, or Firm*—MacPherson Kwok Chen & Heid LLP

(57) **ABSTRACT**

Systems and methods provide non-volatile memory architectures for programmable logic devices. For example, a programmable logic device may include logic blocks, input/output blocks, and configuration memory to store configuration data for configuration of the logic blocks and the input/output blocks. A first non-volatile memory may store user information, besides configuration data, and a first port includes a dedicated serial peripheral interface to provide access to the first non-volatile memory.

20 Claims, 6 Drawing Sheets



U.S. PATENT DOCUMENTS

7,099,189	B1 *	8/2006	Plants	365/185.08
7,190,190	B1 *	3/2007	Camarota et al.	326/38
7,196,963	B1 *	3/2007	Fenstermaker et al. .	365/230.05
7,227,380	B2 *	6/2007	Elftmann et al.	326/40
7,242,218	B2 *	7/2007	Camarota et al.	326/41
7,375,549	B1 *	5/2008	Tang et al.	326/38
7,378,873	B1 *	5/2008	Tang et al.	326/41
2004/0061147	A1	4/2004	Fujita	
2004/0064622	A1	4/2004	Smith	
2005/0189962	A1	9/2005	Agrawal et al.	
2007/0182445	A1 *	8/2007	Chen et al.	326/39

OTHER PUBLICATIONS

U.S. Appl. No. 11/398,437, Tang.
 U.S. Appl. No. 11/293,941, Tang.
 AT17LV(A) Series FPGA Configuration Memory, Ref. 0437K-CNFG-May 2003, pp. 1-18, ATMEL Corporation.
 FPGA Configuration EEPROM Memory, 2322F-CNFG, Jun. 2006, pp. 1-18, ATMEL Corporation.
 FPGA Configuration EEPROM Memory, 2321E-CNFG, Jun. 2003, pp. 1-24, ATMEL Corporation.
 Lattice Semiconductor Corporation, MachXO Family Data Sheet, Version 02.1, May 2006, pp. 1-93.
 Altera Section III User Flash Memory, Max II Device Handbook, vol. 1, 2005, 80 pages.
 Actel ProASIC 3 Flash Family FPGAs with Optional Soft ARM Support, Advanced v0.6, Apr. 2006, 208 pages.

Altera Corporation, Cyclone Device Handbook, vol. 1, 13. Configuring Cyclone FPGAs, Aug. 2005, 50 pages.
 Lattice Semiconductor Corporation, Low-Cost FPGA Configuration Via Industry-Standard SPI Serial Flash, A Lattice Semiconductor White Paper, Jun. 2004, 13 pages.
 Xilinx, Configuring Spartan-3E Xilinx FPGAs with SPI Flash Memories, Arthur Khu, Jan. 3, 2006, 16 pages.
 ST Microelectronics, M25P80, 8 Mbit, Low Voltage, Serial Flash Memory With 40 MHz SPI Bus Interface, Aug. 2004, 41 pages.
 Lattice Semiconductor Corporation, ispXPTM Configuration Usage Guidelines, Technical Notes TN1026, Aug. 2002, pp. 1-18.
 Lattice Semiconductor Corporation, ispXPGA™ Family, Data Sheet, Jul. 2005, 115 pages.
 Lattice Semiconductor Corporation, ispXPGA™ Family, Preliminary Data Sheet, Dec. 2002, pp. 1-90.
 Lattice Semiconductor Corporation, LatticeXP Family Data Sheet, Version 01.0, Feb. 2005, 77 pages.
 Altera, MAX II Device Handbook, <http://www.altera.com>, M115V1-1.7, 330 pages.
 Xilinx, On the Fly Reconfiguration with CoolRunner-II CPLDs, Application Note: CoolRunner-II CPLDs, May 15, 2003, pp. 1-10.
 Actel Corporation, "ProASIC Plus Flash Family FPGAs", v.5.3 May 2006, 173 pages.
 Actel Corporation, ProASIC3 Flash Family FPGAs, ARM7 Soft IP Support in ProASIC3E ARM7-Ready Devices, Oct. 2005, 166 pages.
 Lattice XP Family Data Sheet, Jun. 2006 and earlier, pp. 1-1 to 1-2, 2-1 to 2-28, and 6-1 to 6-2, Lattice Semiconductor Corporation.
 MachXO Family Data Sheet, May 2006 and earlier, pp. 1-1 to 1-2, 2-1 to 2-22, and 7-1 to 7-2, Lattice Semiconductor Corporation.
 * cited by examiner

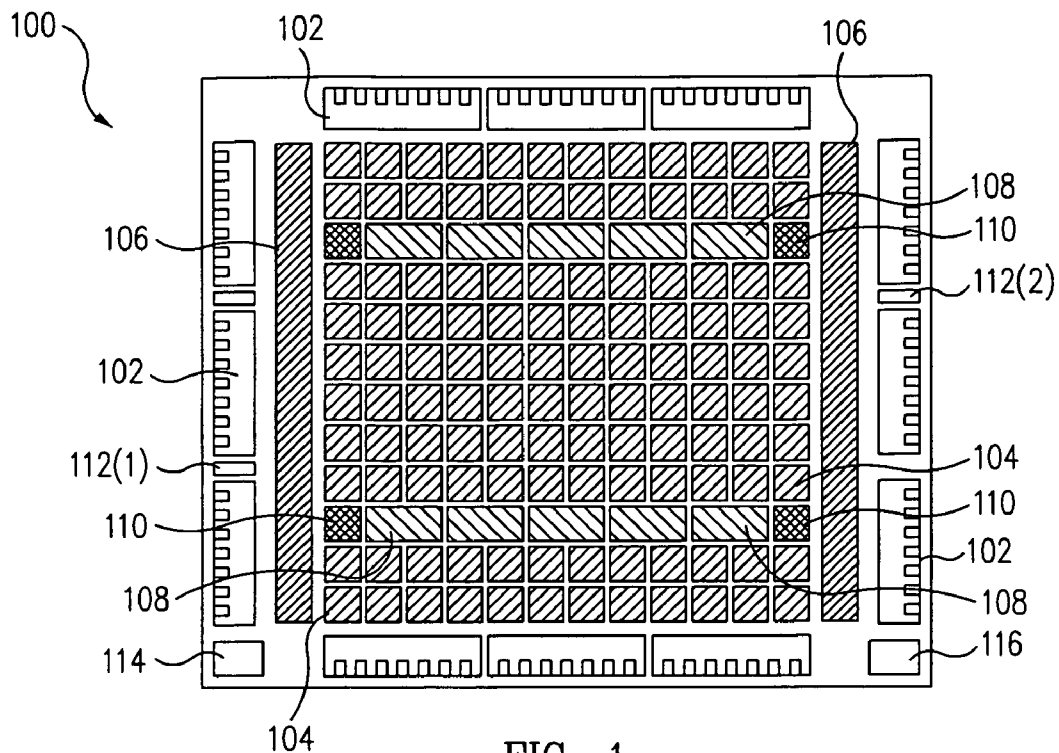


FIG. 1

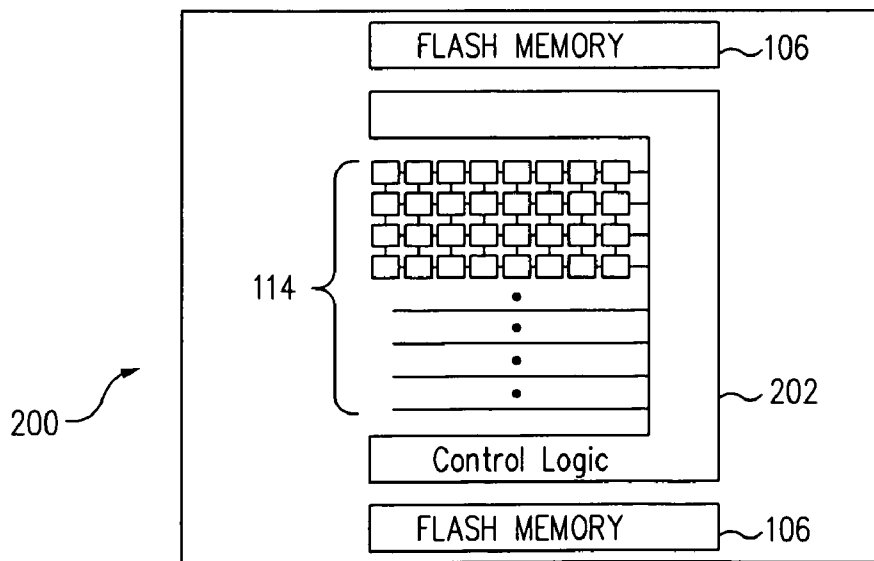


FIG. 2

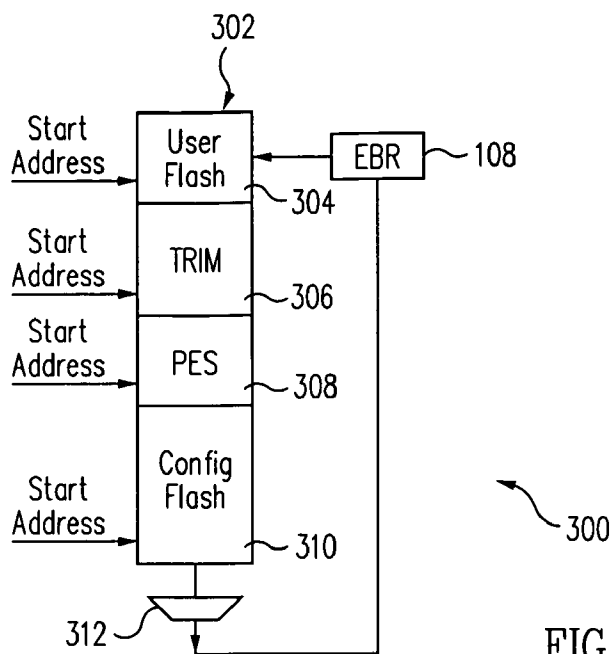


FIG. 3

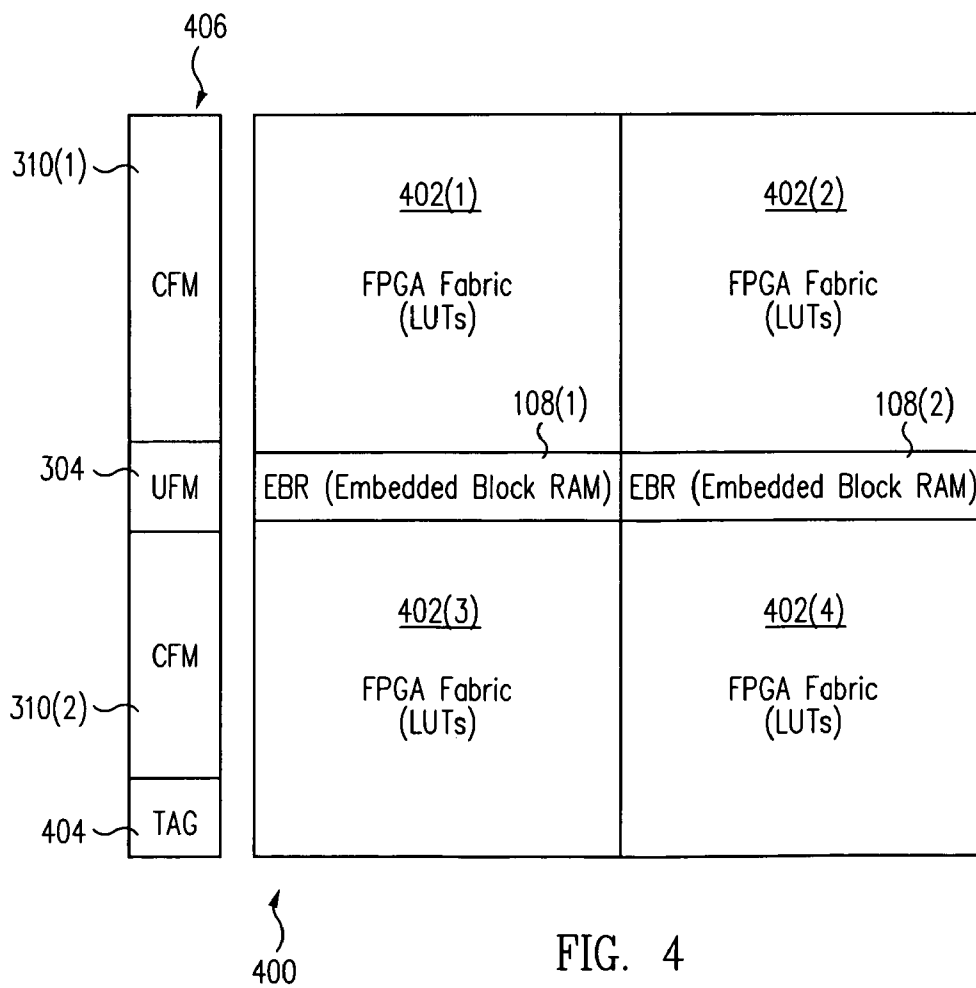


FIG. 4

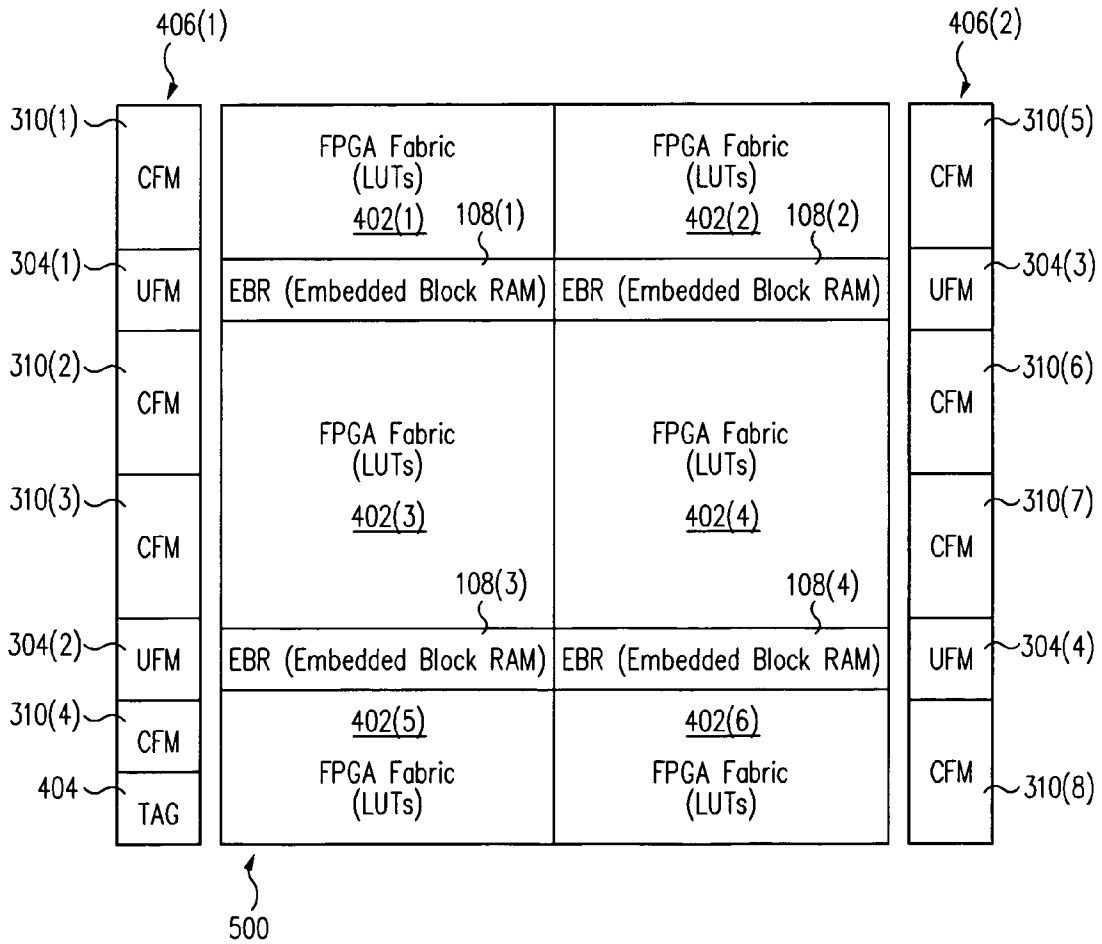


FIG. 5

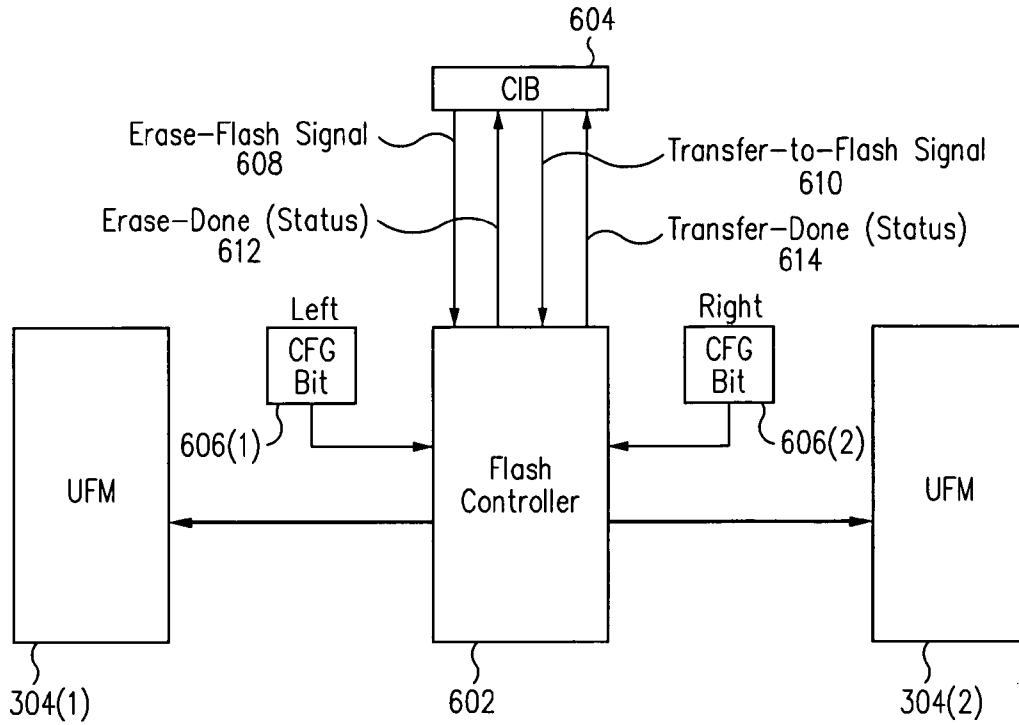
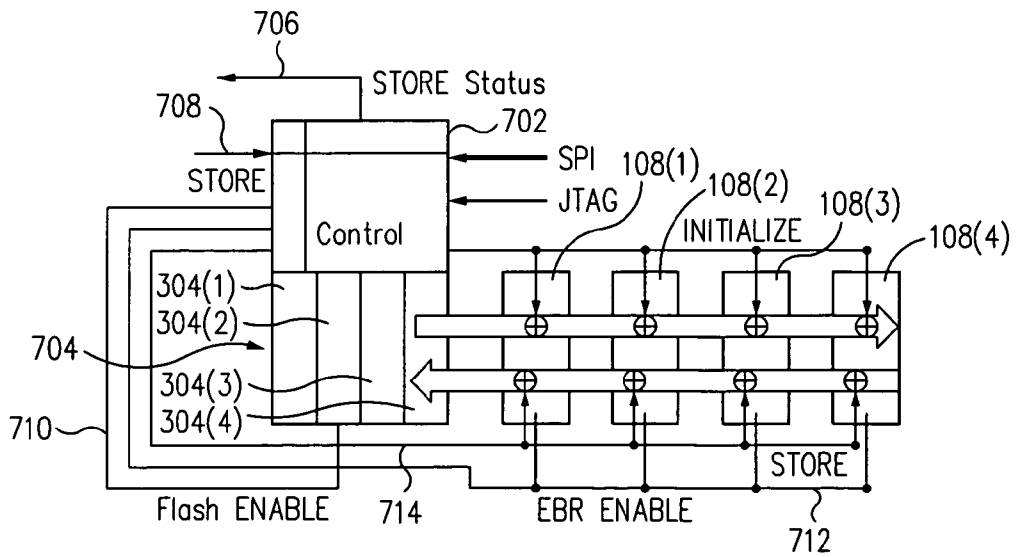


FIG. 6



700

FIG. 7

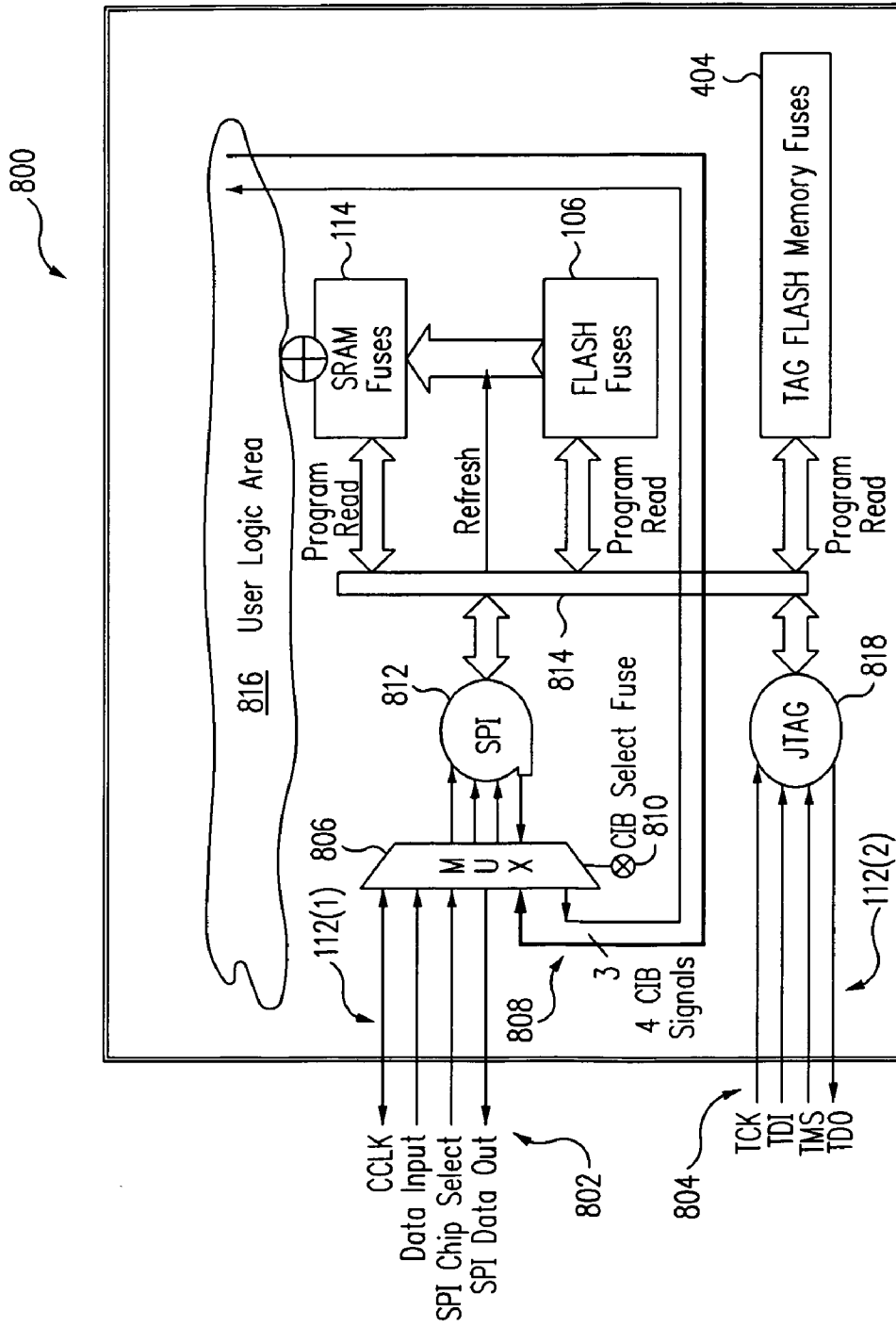


FIG. 8

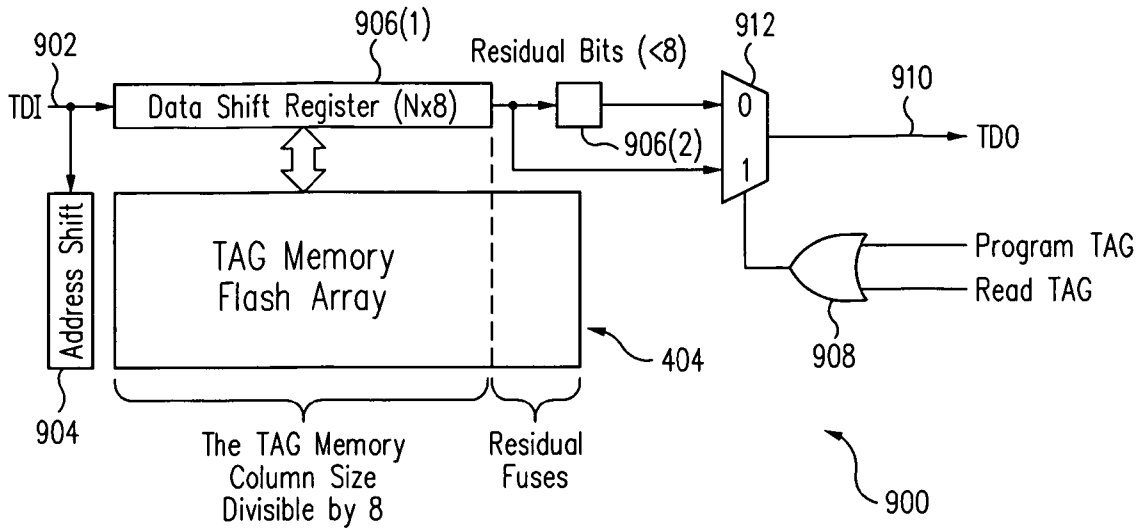


FIG. 9

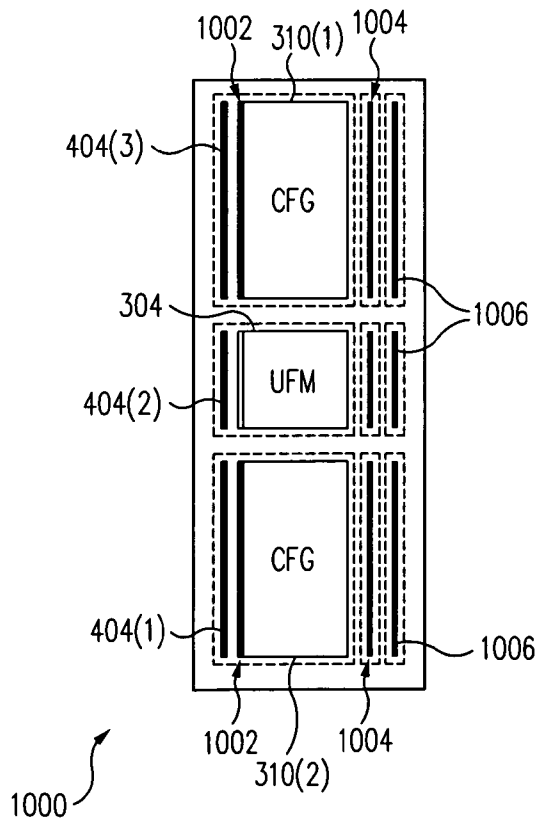


FIG. 10

FLEXIBLE MEMORY ARCHITECTURES FOR PROGRAMMABLE LOGIC DEVICES

TECHNICAL FIELD

The present invention relates generally to electrical circuits and, more particularly, to memory within programmable logic devices.

BACKGROUND

A programmable logic device, such as field programmable gate array (FPGA) or a complex programmable logic device (CPLD), may be used in a variety of applications. A programmable logic device (PLD) offers the advantage of being reprogrammable in the field (e.g., while on the circuit board in its operational environment).

A drawback of a conventional PLD is that, while its configuration memory is being reprogrammed, the PLD typically cannot preserve data stored in its volatile memory (e.g., volatile embedded random access memory (RAM) blocks) and, consequently, the data is lost during the reprogramming process. However, depending upon the particular application, a user of the PLD may prefer to preserve the data stored in the volatile memory for use within the PLD after the reprogramming (i.e., reconfiguration) of the PLD has been completed and the PLD is operating based upon the new configuration data provided during the reprogramming.

Furthermore, a conventional PLD generally does not provide reprogrammable non-volatile memory that a user can directly access for storing desired user information. Thus for example, the conventional PLD would first have to be configured to programmably provide direct user access to the non-volatile memory for storing the desired user information. As a result, there is a need for improved memory and reconfiguration techniques for PLDs.

SUMMARY

In accordance with one embodiment of the present invention, a programmable logic device includes a plurality of logic blocks; a plurality of input/output blocks; configuration memory adapted to store configuration data for configuration of the logic blocks and the input/output blocks of the programmable logic device; a first non-volatile memory adapted to store user information besides configuration data; and a first port having a dedicated serial peripheral interface to provide access to the first non-volatile memory.

In accordance with another embodiment of the present invention, a programmable logic device includes a plurality of logic blocks; configuration memory adapted to store configuration data for configuration of the logic blocks; a first means for storing in a non-volatile manner user information other than configuration data; and means independent of the configuration memory for providing a serial peripheral interface to access the first storing means.

In accordance with another embodiment of the present invention, a method of accessing information stored in non-volatile memory of a programmable logic device includes providing configuration memory for storing configuration data for configuring the programmable logic device; partitioning a first portion of the non-volatile memory to store configuration data for transfer to the configuration memory; partitioning a second portion of the non-volatile memory to store information other than configuration data; and providing a dedicated serial peripheral interface for accessing the first and second portions.

The scope of the invention is defined by the claims, which are incorporated into this section by reference. A more complete understanding of embodiments of the present invention will be afforded to those skilled in the art, as well as a realization of additional advantages thereof, by a consideration of the following detailed description of one or more embodiments. Reference will be made to the appended sheets of drawings that will first be described briefly.

BRIEF DESCRIPTION OF THE DRAWINGS

FIG. 1 shows a block diagram illustrating an exemplary programmable logic device in accordance with an embodiment of the present invention.

FIG. 2 shows a block diagram illustrating exemplary implementation details for a non-volatile memory and configuration memory of the programmable logic device of FIG. 1 in accordance with an embodiment of the present invention.

FIG. 3 shows a block diagram illustrating exemplary implementation details for a non-volatile memory and a volatile memory of the programmable logic device of FIG. 1 in accordance with an embodiment of the present invention.

FIGS. 4 and 5 show block diagrams illustrating exemplary implementation details for a programmable logic device in accordance with an embodiment of the present invention.

FIG. 6 shows a block diagram illustrating exemplary implementation details of a non-volatile memory controller for the programmable logic device of FIG. 1 in accordance with an embodiment of the present invention.

FIG. 7 show a block diagram illustrating exemplary implementation details for data transfer between a non-volatile memory and volatile memory for the programmable logic device of FIG. 1 in accordance with an embodiment of the present invention.

FIG. 8 shows a block diagram illustrating exemplary implementation details for accessing a non-volatile memory of the programmable logic device of FIG. 1 in accordance with an embodiment of the present invention.

FIG. 9 shows a block diagram illustrating additional exemplary implementation details for accessing a non-volatile memory of the programmable logic device of FIG. 1 in accordance with an embodiment of the present invention.

FIG. 10 shows a block diagram illustrating exemplary implementation details for a non-volatile memory of the programmable logic device of FIG. 1 in accordance with an embodiment of the present invention.

Embodiments of the present invention and their advantages are best understood by referring to the detailed description that follows. It should be appreciated that like reference numerals are used to identify like elements illustrated in one or more of the figures.

DETAILED DESCRIPTION

FIG. 1 shows a block diagram illustrating an exemplary programmable logic device (PLD) 100 in accordance with an embodiment of the present invention. PLD 100 generally includes input/output (I/O) blocks 102 and programmable logic blocks 104. I/O blocks 102 provide I/O functionality (e.g., supports one or more I/O and/or memory interface standards) for PLD 100. Programmable logic blocks 104 (e.g., also referred to in the art as configurable logic blocks or logic array blocks) provide logic functionality for PLD 100, such as LUT-based logic typically associated with FPGAs or array-based logic typically associated with CPLDs.

PLD 100 may also include reprogrammable non-volatile memory 106 (e.g., blocks of EEPROM or flash memory),

volatile memory **108** (e.g., block SRAM), clock-related circuitry **110** (e.g., PLL circuits), one or more data ports **112**, configuration memory **114**, and/or an interconnect **116**. It should be understood that the number and placement of the various elements, such as I/O blocks **102**, logic blocks **104**, non-volatile memory **106**, volatile memory **108**, clock-related circuitry **110**, data port **112**, configuration memory **114**, and interconnect **116**, is not limiting and may depend upon the desired application. Furthermore, it should be understood that the elements are illustrated in block form for clarity and that certain elements, such as configuration memory **114** and interconnect **116**, would typically be distributed throughout PLD **100**, such as in and between logic blocks **104**, to perform their conventional functions (e.g., storing configuration data that configures PLD **100** and providing routing resources, respectively).

Data port **112** may be used for programming PLD **100**, as would be understood by one skilled in the art. For example, data port **112(1)** may represent a programming port such as a central processing unit (CPU) port (also referred to as a peripheral data port or a sysCONFIG programming port) and/or a serial peripheral interface (SPI) port. Data port **112(2)** may represent, for example, a programming port such as a joint test action group (JTAG) port by employing standards such as Institute of Electrical and Electronics Engineers (IEEE) 1149.1 or 1532 standards. Data ports **112(1)** and **112(2)** are not both required, but one or the other or both may be included to receive configuration data and commands, depending upon the desired application and requirements as discussed further herein in accordance with one or more embodiments of the present invention.

Non-volatile memory **106** may be used to store configuration data within PLD **100** for transfer to configuration memory **114** of PLD **100** upon power up or during reconfiguration of PLD **100**. This may drastically reduce the time to reconfigure PLD **100** relative to an external bitstream (e.g., reduce the time from seconds to microseconds for loading of configuration data into configuration memory **114**).

Non-volatile memory **106** may also be used to provide background programming and/or storage for PLD **100** in accordance with some embodiments of the present invention. For example for storage functionality, non-volatile memory **106** may be used to store data from volatile memory **108** during the reconfiguration process in accordance with an embodiment of the present invention. Thus as an example, the data stored by volatile memory **108** within PLD **100**, just prior to reconfiguration, may be preserved in non-volatile memory **106** during the reconfiguration process and then written back into volatile memory **108** prior to returning to user mode, as explained further herein.

As another example for storage functionality, a non-volatile memory (e.g., as part of non-volatile memory **106** and referred to herein as a tag memory) may be provided with direct access by a user of the PLD in accordance with an embodiment of the present invention. For example, the tag memory may be used to replace embedded EEPROM memory blocks or other conventional non-volatile memory and store various desired user and/or manufacturer information (e.g., system management and/or control information, such as electronic ID codes, version management information, date stamping, manufacturing version control information, asset management and tracking, system calibration settings, device serialization, and/or inventory control).

For example for background programming, PLD **100** may remain in user mode, based on the configuration data stored in configuration memory **114** within PLD **100**, while non-volatile memory **106** is programmed with new configuration data

(e.g., a new user defined pattern). Once the new configuration data is stored in non-volatile memory **106**, this data can be transferred from non-volatile memory **106** to configuration memory **114** to reconfigure PLD **100**, a process sometimes referred to as refresh. The refresh process can be initiated by a signal or instruction provided to data port **112** (e.g., pulsing data port **112(1)** or providing a JTAG refresh instruction via data port **112(2)**).

As a specific example, FIG. 2 shows a block diagram illustrating a PLD **200**, which provides exemplary implementation details for PLD **100** of FIG. 1 in accordance with an embodiment of the present invention. PLD **200** includes non-volatile memory **106** (e.g., flash memory), configuration memory **114**, and control logic **202**.

Configuration memory **114** (e.g., volatile SRAM cells or other types of volatile or non-volatile memory) are used in a conventional manner to store configuration data, which determines the user defined functions of PLD **200** (e.g., determines programmable functions of I/O blocks **102**, logic blocks **104**, and interconnect **116**). Control logic **202** controls, for example in accordance with an embodiment of the present invention, the internal transfer of the configuration data from non-volatile memory **106** to configuration memory **114** and may also control the transfer of data from data ports **112** to non-volatile memory **106** and configuration memory **114**, as would be understood by one skilled in the art.

It should be understood that flash memory represents an exemplary type of memory for non-volatile memory **106**, but other types of non-volatile memory (e.g., EEPROM) that can be reprogrammed once or repeatedly may be substituted for non-volatile memory **106**. Furthermore, either non-volatile memory **106** or configuration memory **114** may be programmed (i.e., receive and store information in its memory) to store configuration data for PLD **200**, but the device functionality of PLD **200** is determined by the information stored in configuration memory **114**. Thus, PLD **200** may be configured (including reconfiguration or partial reconfiguration), for example, when information is programmed into configuration memory **114**.

It should also be understood, in accordance with one or more embodiments of the present invention, that non-volatile memory **106** and configuration memory **114** may each be programmed (including reprogrammed), for example, via data port **112(1)** or data port **112(2)**, depending upon the desired application or design requirements. Further details regarding programming may be found in U.S. Pat. No. 6,828, 823 and U.S. Patent Application Publication No. 2005/0189962 A1, published Sep. 1, 2005.

In general, during programming of configuration memory **114** and reconfiguration of the PLD (e.g., PLD **100**), it may be desired by a user of the PLD to preserve data stored in volatile memory **108**. However for conventional approaches, any information stored in volatile memory **108** generally cannot be saved and is lost during the reconfiguration process. Furthermore, if flash memory is embedded within the PLD to provide non-volatile memory, the flash memory typically is limited. For example, the flash memory may have an inadequate, fixed amount of storage space, a slow read/write access speed, a limited number of possible read/write cycles, limited access (e.g., access to the flash memory only if the PLD has been configured), and/or undesirable data structure restrictions.

In contrast for example, in accordance with one or more embodiments of the present invention, techniques are disclosed to preserve the data stored in volatile memory **108** during a reconfiguration and/or provide immediate access to non-volatile memory (i.e., tag memory) within the PLD for

user and/or manufacturer access and information storage. For example for data preservation, non-volatile memory **106** may be partitioned to provide storage for configuration data (e.g., a configuration flash section) and to provide non-volatile storage (i.e., a user flash section) for volatile memory **108** (e.g., to preserve the data through a reconfiguration, if desired by a user of the PLD). Furthermore in accordance with some embodiments it should be understood that, rather than partitioning one non-volatile memory **106**, one or more of non-volatile memory **106** may be implemented to provide non-volatile storage for volatile memory **108**, while one or more of non-volatile memory **106** may be implemented to provide non-volatile storage for configuration data.

Thus, for example for some embodiments, non-volatile memory **106** may be used as non-volatile storage for a user to store not only various information, such as system management information, manufacturing control information, and/or failure statistics information for board level diagnostics, but also to store in a non-volatile fashion data from volatile memory **108** to preserve during a reconfiguration or power down of PLD **100** (also referred to as store-to-flash capability). Furthermore, in accordance with one or more embodiments of the present invention, one or more blocks of volatile memory **108** may be operated as shadow flash memory during user mode of operation to provide fast, random, and unlimited read/write access as well as a flexible, scalable data structure capability. Consequently, in accordance with some embodiments, volatile memory **108** may function as virtual user flash memory with store-to-flash capability to preserve the data during a reconfiguration (e.g., transparent field reconfiguration capability).

For example, FIG. 3 shows a PLD **300**, which illustrates exemplary implementation details for a non-volatile memory **302** and volatile memory **108** (e.g., labeled EBR for embedded block RAM) of PLD **100** of FIG. 1 in accordance with an embodiment of the present invention. PLD **300** illustrates the general functionality for non-volatile memory **302** and volatile memory **108** in accordance with some embodiments. For example, non-volatile memory **302** may be used to store data from volatile memory **108**, which allows volatile memory **108** to be used as virtual flash memory (e.g., also referred to as shadow flash) during a user mode of operation.

Specifically as an example, non-volatile memory **302** may represent a specific implementation example for non-volatile memory **106**, with non-volatile memory **302** partitioned (segmented) into a user flash portion **304**, a trim portion **306**, a test portion **308**, and a configuration flash portion **310** (with trim portion **306** and test portion **308** being optional portions within non-volatile memory **302**). User flash portion **304** may be used to store data for volatile memory **108** in a non-volatile manner, such as to preserve the data stored by volatile memory **108** during a reconfiguration of PLD **300** (e.g., a store-to-flash (STF) operation).

Trim portion **306** may be used to store trim data, which may be used for adjusting or trimming various parameters within PLD **300** (e.g., adjusting current source values, resistor values, or other circuit parameters as would be understood by one skilled in the art). Test portion **308** (e.g., also referred to as program electronic signature (PES) in one embodiment) may be used to store test data and other types of information, as desired. Configuration flash portion **310** may be used to store configuration data for transfer to configuration memory **114** to reconfigure PLD **300**.

As shown in FIG. 3, non-volatile memory **302** (e.g., flash memory) may have a different starting address for each portion or section. User flash portion **304** may be accessed sequentially and coupled (e.g., via routing resources **312**,

such as with multiplexers and other circuitry associated with interconnect **116**) to its associated volatile memory **108**. Therefore, data can be loaded into volatile memory **108** from user flash portion **304** (e.g., during reconfiguration or as desired) and volatile memory **108** can be accessed randomly during user mode of operation. If all or a portion of PLD **300** which includes volatile memory **108** is to be reconfigured, the data in volatile memory **108** which is desired to be preserved through the reconfiguration process may be loaded into user flash portion **304** (e.g., under control of a store-to-flash (STF) command).

In general in accordance with an embodiment of the present invention, non-volatile memory **302** illustrates the partitioning of flash memory into configuration flash portion **310** (e.g., a configuration flash area) and user flash portion **304** (e.g., a user flash area), which allows volatile memory **108** to function, if desired by a user, as shadow flash memory (e.g., virtual flash memory) with STF capability. Configuration flash portion **310** may be used to store and provide configuration data to configuration memory **114** (e.g., provide initializing configuration logic), while user flash portion **304** may be used to store data for volatile memory **108** and provide data for initializing volatile memory **108** (e.g., volatile memory **108** is the primary interface with user flash portion **304**). Non-volatile memory **302** may further include additional areas (e.g., trim portion **306** and test portion **308**) to provide additional memory for users to store other information based on their specific requirements or application.

The techniques illustrated herein may provide certain advantages over a conventional PLD. For example, by utilizing volatile memory **108** as virtual flash memory, there may be certain benefits over conventional techniques in terms of power consumed, speed (e.g., fast accessibility), accessibility (e.g., random, unlimited read/write), and data structure (e.g., flexible data structure and organization). By utilizing volatile memory **108** as shadow user flash, less power may be consumed relative to using non-volatile memory **302** directly. Volatile memory **108** can function as shadow user flash and provide virtual user flash capability as desired by a user due to the STF capability for user flash portion **304**. The amount of shadow user flash provided by PLD **300** may vary and scale with device density (e.g., from 180 k bits to 400 k bits or more) and may be organized as one or more separate shadow user flash blocks, as described further herein.

Volatile memory **108** may also provide speed advantages relative to flash technology. For example, shadow user flash may be accessed at the speed of the volatile memory technology of volatile memory **108** rather than the relatively slow read/write speeds of non-volatile memory **302**. Thus, by using volatile memory **108** as shadow user flash, virtual non-volatile storage space may be provided at the speed of SRAM technology, for example, if volatile memory **108** is implemented as SRAM.

Volatile memory **108** may also provide accessibility advantages over non-volatile memory **302**. For example, volatile memory **108** may provide random read/write access capability as shadow user flash, rather than the typically more restricted sequential access of non-volatile memory **302** (e.g., implemented as flash technology). Furthermore for example, volatile memory **108** may provide essentially unlimited read/write access capability, rather than the typically more restrictive endurance limitations applied to the read/write access capability of non-volatile memory **302** (e.g., not limited by the endurance limitations of flash technology).

Volatile memory **108** may also provide flexible data structure, organization, and access capability. For example, by using volatile memory **108** (e.g., SRAM block), the conven-

tional routing and addressing structure may be utilized to provide flexible data access, with volatile memory **108** providing flexible data width organization and, for multiple blocks of volatile memory **108**, cascading for both width and depth data structure flexibility. For example, volatile memory **108** may provide various data structure access flexibility (e.g., by 1, by 2, by 4, by 8, by 16, by 32, by 36, etc., such as 16 K by 1, 8 K by 2, 4 K by 4, 2 K by 8, 1 K by 18, 512 by 36, etc.).

The techniques disclosed herein may provide additional benefits or advantages. For example, there does not have to be any special-purpose or dedicated routing and interconnect to use volatile memory **108** as shadow user flash, but rather the PLD's inherent routing structure (e.g., interconnect **116**) may be used. Furthermore, the use of volatile memory **108** as shadow user flash is flexible and user-controlled by providing STF control capability for saving the information stored in volatile memory **108** to non-volatile memory **302** (e.g., flash memory).

FIGS. **4** and **5** show block diagrams of PLD **400** and PLD **500**, respectively, illustrating exemplary implementation details for a PLD (e.g., PLD **100**) in accordance with an embodiment of the present invention. For example, PLD **400** illustrates a non-volatile memory **406** (e.g., similar to non-volatile memory **106** or non-volatile memory **302**), volatile memory **108**, and logic portions **402**. Logic portions **402** represent various programmable circuitry of PLD **400** and may include, for example, I/O blocks **102**, programmable logic blocks **104**, configuration memory **114**, and interconnect **116**.

Non-volatile memory **406** may be partitioned into user flash portion **304** (UFM) and configuration flash portions **310** (labeled CFM and separately referenced as configuration flash portions **310(1)** and **310(2)**). Non-volatile memory **406** may further include a tag memory **404** (tag memory portion), which may represent a bank of memory (tag memory) for use as a user and/or manufacturer desires (e.g., a scratchpad memory). As discussed further herein in accordance with one or more embodiments of the present invention, tag memory **404** may provide a memory architecture that provides a variable amount of tag memory (e.g., scales with PLD density) which is flexible, inexpensive, and accessible via a dedicated SPI interface (e.g., direct, sequential access).

Configuration flash portion **310(1)** may be used to store the configuration data for transfer to configuration memory **114** within logic portions **402(1)** and **402(2)**, while configuration flash portion **310(2)** may be used to store the configuration data for transfer to configuration memory **114** within logic portions **402(3)** and **402(4)** to configure those portions of PLD **400**. User flash portion **304** may be associated with volatile memory **108(1)** and/or **108(2)**. For example, volatile memory **108(1)** and **108(2)** (e.g., embedded block RAM or EBR) may be mapped into user flash portion **304** and, as explained further herein, a STF operation may be performed (e.g., during a reconfiguration process) to save the information stored in volatile memory **108(1)** and **108(2)** to user flash portion **304**. As a specific example, the information transferred from volatile memory **108(1)** and **108(2)** to user flash portion **304** may then be transferred back from user flash portion **304** to volatile memory **108(1)** and **108(2)** during the reconfiguration process but prior to entering user mode of operation so that the information in volatile memory **108(1)** and **108(2)** is preserved during the reconfiguration process.

PLD **500** of FIG. **5** illustrates that any number of non-volatile memory **406** and volatile memory **108** may be provided and, furthermore, each volatile memory **406** may be partitioned as desired. For example, configuration flash portion **310(1)** may be used to store the configuration data for

transfer to configuration memory **114** within logic portion **402(1)**, while configuration flash portion **310(5)** may be used to store the configuration data for transfer to configuration memory **114** within logic portion **402(2)**.

In a similar fashion, user flash portion **304(1)** may be associated with and mapped to volatile memory **108(1)**, while user flash portion **304(3)** may be associated with and mapped to volatile memory **108(2)**. Likewise, configuration flash portions **310(2)** and **310(3)**, **310(4)**, **310(6)** and **310(7)**, and **310(8)** may be associated with logic portions **402(3)**, **402(5)**, **402(4)**, and **402(6)**, respectively, while user flash portions **304(2)** and **304(4)** may be associated with and mapped to volatile memory **108(3)** and **108(4)**, respectively. Thus, for example, shadow user flash memory may be provided of variable density, with the amount of shadow user flash available related to the number or amount of volatile memory **108** in the PLD and which may scale with density. Furthermore in accordance with some embodiments, it should be understood that each volatile memory **108** within PLD **500** may be configured independently as shadow user flash or as any other type of conventional memory implementation (e.g., as ROM, RAM, etc.).

In accordance with an embodiment of the present invention, volatile memory **108** may function as the primary interface for user flash portion **304**. For example, during user mode of operation, direct access to user flash portion **304** may only be through the associated volatile memory **108** (shadow user flash).

FIG. **6** shows a block diagram illustrating a PLD **600**, which provides exemplary implementation details for a non-volatile memory controller **602** for PLD **100** of FIG. **1** in accordance with an embodiment of the present invention. PLD **600** illustrates, for example, the STF capability for PLD **100** as discussed herein.

For example, controller **602** controls user flash portions **304** (e.g., **304(1)** and **304(2)**) for transferring information between volatile memory **108** and user flash portions **304** and may be separate from or may be part of control logic **202**. As an example, control logic **202** and controller **602** control the transfer of configuration data from non-volatile memory **106** to configuration memory **114** and also control the transfer of information between non-volatile memory **106** (e.g., user flash portions **304**) and volatile memory **108**.

As a specific implementation example, a store-to-flash signal may be provided to controller **602** to command the information stored in volatile memory **108** to be transferred to the associated mapped user flash portion **304**. The store-to-flash signal may be provided, for example, via a common interface block (CIB) **604**. As another specific implementation example, in addition to the store-to-flash signal, a flash busy signal and a status signal may be provided by controller **602** to indicate if a flash related operation is in progress (e.g., store-to-flash process) and operations status (e.g., whether the store-to-flash operation passed or failed), respectively.

Each user flash portion **304** may have an associated configuration bit **606** (e.g., one of configuration memory cells **114**) for indicating to controller **602** whether associated user flash portion **304** is to be used in the STF capacity (i.e., user flash mode). For example, configuration bits **606(1)** and **606(2)** are associated with user flash portions **304(1)** and **304(2)**, respectively. Therefore in accordance with one embodiment, controller **602** saves the information in volatile memory **108** based upon the store-to-flash signal and the values stored in configuration bits **606**.

Additional information and control signals may be used, as illustrated in FIG. **6**. For example, rather than just the store-to-flash signal, controller **602** may instead or in addition

receive a flash erase signal **608** and a transfer-to-flash signal **610** and provide an erase done signal **612** and a transfer done signal **614**.

Flash erase signal **608** would be used to command controller **602** to erase user flash portions **304** whose configuration bit **606** is appropriately set to designate user flash mode for that user flash portion **304**. Once the erasure has been completed, controller **602** may indicate this (e.g., to user logic) via erase done signal **612**. Transfer-to-flash signal **610** would then be used to command controller **602** to transfer the information in volatile memory **108** to the associated user flash portion **304**. Once the transfer has been completed, controller **602** may indicate this (e.g., to user logic) via transfer done signal **614**.

The information stored in user flash portions **304** may be protected from unauthorized access in the same way as is conventionally done for protecting configuration data from unauthorized access from non-volatile memory with the PLD. For example, the data stored in user flash portions **304** and configuration flash portions **310** may be secured from unauthorized reading out by a conventional security fuse, which prevents the reading out from the PLD of the information stored in the embedded non-volatile memory.

FIG. 7 show a block diagram illustrating a PLD **700**, which provides exemplary implementation details for data transfer between a non-volatile memory **704** and volatile memory **108** for PLD **100** of FIG. 1 in accordance with an embodiment of the present invention. Non-volatile memory **704** for this exemplary implementation may represent four user flash portions **304** (i.e., user flash portions **304(1)** through **304(4)**) that correspond to volatile memory **108(1)** through **108(4)**. Control logic **702** may represent controller **602** (FIG. 6) or represent controller **602** and control logic **202** (FIG. 1) and it should be understood that other circuitry within PLD **700** is not shown for clarity.

Volatile memory **108(1)** through **108(4)**, for example, have been configured by a user pattern to function as user flash memory, RAM, RAM, and ROM, respectively. Consequently in accordance with an embodiment of the present invention, user flash portions **304(1)** through **304(4)** may provide non-volatile storage for corresponding volatile memory **108(1)** through **108(4)** if, for example, the associated configuration bit **606** designates user flash mode.

For example, FIG. 7 illustrates, with the bold arrow from non-volatile memory **704** through volatile memory **108**, the ability to transfer data from non-volatile memory **704** to volatile memory **108** to initialize volatile memory **108** with desired data. For example, control logic **702** may provide an enable signal **712** (labeled EBR enable) to volatile memory **108** to enable volatile memory **108** to store the data provided by non-volatile memory **704**.

Control logic **702** may be controlled, for example, via SPI or JTAG ports (e.g., via data port **112**) during the store-to-flash operation or to initiate the store-to-flash operation. As an example, a store signal **708** provided to control logic **702** may include flash erase signal **608** and transfer-to-flash signal **610**, while control logic **702** may provide a store status signal **706** that includes erase done signal **612** and transfer done signal **614**, with these signals used as described in reference to FIG. 6.

PLD **700** may be viewed, for an operational example, as operating in a user mode of operation as configured by a user pattern (i.e., a user defined pattern "A"). If a user desires to reconfigure PLD **700**, non-volatile memory **704** may be erased (e.g., write all logical high values "1" by command of flash erase signal **608**) and then a new user pattern (i.e., a user defined pattern "B") may be written to non-volatile memory

704, while PLD **700** operates in user mode with user defined pattern "A" (e.g., background programming operation performed). For example, non-volatile memory **704** may now store a default pattern (e.g., store all logical low values "0"), except for section **304(4)** corresponding to volatile memory block **108(4)** that a user desires to function as ROM and thus section **304(4)** stores the desired ROM data (e.g., the same ROM data or different ROM data as in user defined pattern "A").

Prior to transferring the user defined pattern "B" into configuration memory **114** from configuration flash portions **310**, a user may desire to preserve the data stored in volatile memory **108**. Therefore, as illustrated in FIG. 7 by the bold arrow from volatile memory **108** to non-volatile memory **704**, a store-to-flash operation (e.g., by command of transfer-to-flash signal **610**) may be performed to transfer the data stored in volatile memory **108(1)**, **108(2)**, **108(3)**, and/or **108(4)** to user flash portions **304(1)**, **304(2)**, **304(3)**, and/or **304(4)**, respectively, to preserve the data during the reconfiguration process.

During the store-to-flash operation, control logic **702** may provide a store control signal **714** to volatile memory **108** and a flash enable control signal **710** to non-volatile memory **704** to control the transfer and storage of data from volatile memory **108** to non-volatile memory **704**. Upon completion of the store-to-flash operation, the refresh operation may be performed to reconfigure PLD **700**. For example for the refresh operation, the configuration data stored in configuration flash section **310** may be transferred to configuration memory **114**, and the data stored and preserved in non-volatile memory **704** may be transferred to volatile memory **108**. The refresh operation may be initiated, for example, by powering down and then powering up PLD **700**, toggling a program pin of PLD **700**, or sending a refresh command to PLD **700** (e.g., via an SPI interface or JTAG port).

Thus in general in accordance with some embodiments of the present invention, systems and methods are disclosed herein to provide improved non-volatile storage techniques for programmable logic devices. For example, in accordance with an embodiment of the present invention, a non-volatile PLD (e.g., FPGA) with user flash is disclosed that provides for the preservation of user data within volatile memory blocks. For example in accordance with some embodiments, the PLD includes flash memory that is partitioned into configuration flash and user flash sections, with the user flash sections associated with the volatile memory blocks. Consequently, the volatile memory blocks may be configured to function as shadow user flash, with the information transferred to the corresponding user flash sections when desired by a user to preserve the information (e.g., during a reconfiguration or power down of the PLD).

As another example and as noted herein (e.g., in reference to FIG. 4) in accordance with one or more embodiments of the present invention, techniques are also disclosed to provide immediate access to non-volatile memory (i.e., tag memory) within the PLD by a user and/or manufacturer to store desired information. The tag memory is provided within the PLD, which may or may not have the store-to-flash capability (e.g., a volatile memory and corresponding non-volatile memory), in accordance with some embodiments of the present invention.

As an example, conventional PLDs may have embedded non-volatile memory that could be used by a user of the PLD to store information other than configuration data. However, the PLD typically must be configured to provide an interface prior to the user having direct access (e.g., non-JTAG access)

to the non-volatile memory. In contrast, techniques are disclosed herein to provide direct access to tag memory 404 without configuring the PLD.

For example, FIGS. 8 and 9 illustrate PLDs 800 and 900, which provide exemplary implementation details for a PLD (e.g., PLD 100 or PLD 400) for accessing tag memory 404 in accordance with an embodiment of the present invention. Specifically referring to FIG. 8, PLD 800 illustrates techniques for accessing tag memory 404 via data port 112(1), which represents an SPI interface (e.g., a dedicated, hard-wired slave serial peripheral interface (SPI) port providing a 4-wire serial interface) in accordance with an embodiment of the present invention. PLD 800 includes data port 112(1) and its SPI interface block 812, an interface circuit 814 (e.g., a common interface block (CIB) or an arbitration bus), and tag memory 404 (e.g., flash memory fuses).

Data port 112(1) supports the communication of SPI signals 802 (labeled CCLK (CLK), Data Input (SOSPI), SPI Chip Select (CSSPISN), and SPI Data Out (SISPI)) for programming and reading tag memory 404, as would be understood by one skilled in the art. Tag memory 404 of FIG. 8 may represent flash memory fuses, which may or may not be formed as part of the flash fuses of non-volatile memory 106 in accordance with one or more embodiments of the present invention.

SPI signals 802 may be received by SPI interface block 812 via a multiplexer 806, which selects between SPI signals 802 and signals 808 from user logic 816 to provide to SPI interface block 812. Multiplexer 806 may be controlled, for example, by a select fuse 810 (e.g., a memory cell from configuration memory 114 or non-volatile memory 106) for selecting between SPI signals 802 and signals 808, with the default (i.e., unprogrammed state of select fuse 810) for example being to select SPI signals 802. Thus for this example, select fuse 810 must be programmed to control multiplexer 806 to route signals 808 (e.g., from a CIB within user logic 816) between SPI interface block 812 and user logic 816.

SPI signals 802 may be provided between PLD 800 and an external master SPI device (e.g., a CPU and/or master SPI flash device, not shown) to allow the master SPI device to program and read tag memory 404 via SPI interface block 812 and interface circuit 814. Signals 808 may be provided between SPI interface block 812 (i.e., via multiplexer 806) and user logic 816, which may represent any type of user-defined logic (e.g., including logic configured in programmable logic blocks 104), to allow user logic 816 to program and read tag memory 404 via SPI interface block 812 and interface circuit 814.

Interface circuit 814 is used as a general interface for communication of signals between SPI interface block 812 and tag memory 404. Interface circuit 814 may also be used as a general interface for communication of signals between SPI interface block 812 and configuration memory 114 and/or non-volatile memory 106 to provide program, read, and/or refresh signals, as illustrated.

Data port 112(2) may also optionally be provided to support JTAG signals 804 (labeled TCK, TDI, TMS, and TDO) for interfacing PLD 800 and JTAG interface block 818 with external devices supporting JTAG interfaces. As shown, interface circuit 814 may also be used as a general interface between JTAG interface block 818 and tag memory 404, non-volatile memory 106, and/or configuration memory 114 to provide program, read, and/or refresh signals, as illustrated. For example, interface circuit 814 may represent an arbitration bus for SPI interface block 812 and JTAG interface block 818, with for example JTAG interface block 818 (e.g.,

a JTAG engine) having higher priority than SPI interface block 812 (e.g., an SPI engine). Thus, if SPI interface block 812 and JTAG interface block 818 are being accessed in parallel by a user of PLD 900 through corresponding data ports 112(1) and 112(2), interface circuit 814 functioning as an arbitration bus would give higher priority to JTAG interface block 818 than SPI interface block 812 (e.g., ignore SPI interface block 812).

Consequently in accordance with one or more embodiments of the present invention, a dedicated SPI interface is disclosed. This dedicated interface, which is independent of the PLD configuration memory, provides a user the ability to program and read tag memory 404, whether or not PLD 800 is configured. Optionally, a JTAG port is also provided for a user to program and read tag memory 404. Furthermore in accordance with an embodiment of the present invention, tag memory 404 may be read and programmed selectively under control from user logic 816 that is implemented by a user within PLD 800. Additionally in accordance with an embodiment of the present invention, configuration memory 114 may be programmed, refreshed, and/or read and non-volatile memory 106 may be programmed and read under control from user logic 816, SPI signals 802, and/or JTAG signals 804.

PLD 900 of FIG. 9 illustrates additional exemplary implementation details for accessing tag memory 404 in accordance with an embodiment of the present invention. Specifically, PLD 900 illustrates exemplary JTAG details for JTAG interface block 818 of PLD 800 and an exemplary bit arrangement for tag memory 404.

In general for example, tag memory 404 may represent a block of flash memory that is available for write (programming) and read operations through data port 112(1). For example, the write and read operations may occur as desired by a user, whether PLD 900 is in a programmed or unprogrammed state (e.g., PLD 900 is blank). However, it should be understood that if data port 112(1) is designed to permit BSCAN test control or is being used for programming of PLD 900 or other operations under control of a user, then there may be certain time periods where data port 112(1) is being used and a user may not be able to immediately access tag memory 404 via data port 112(1). It should also be understood that tag memory 404 may be tested and accessed by the PLD manufacturer via data port 112(2), if available.

Tag memory 404 as shown in FIG. 9 may be arranged such that the fuse array organization has, for example, a column size byte bounded (i.e., divisible by or a multiplication of eight). As an example in accordance with an embodiment of the present invention, tag memory 404 may be formed as part of non-volatile memory 106 that is not byte bounded (e.g., 11 bits rather than the limited 8 bits for tag memory 404). Thus, as shown in FIG. 9, a data shift register 906 may be segmented into an eight-bit portion (906(1)), with "N" equal to one, and a three-bit portion (906(2)) for this example, with the three-bit portion 906(2) storing the unused data from the residual fuses of tag memory 404.

As an exemplary operation for PLD 900, if a program TAG control signal or a read TAG control signal is asserted (e.g., provides a logical high value) to a logic gate 908 to provide a program operation or a read operation of tag memory 404, then logic gate 908 provides a logical high value to control a multiplexer 912 to bypass the residual bits of data shift register 906(2) and only provide the eight bits in data shift register 906(1) as output data on a JTAG TDO path 910. If non-volatile memory 106 data not associated with tag memory 404 is being provided on a JTAG TDI path 902 or is being accessed, then logic gate 908 provides a logical low

value to multiplexer **912** to allow the 11-bit data of data shift register **906(1)** and **906(2)** through multiplexer **912** to TDO path **910**.

If more than one row is provided for tag memory **404**, an address shift register **904** may be provided to access each row. It should be understood that the same address shift register and instruction/command may be used to access the rows of tag memory **404**. For example, a TAG ENABLE instruction/command may be sufficient to distinguish between accessing non-volatile memory **106** storing configuration data and the portion of non-volatile memory **106** used as tag memory **404**. If tag memory **404** has multiple rows, the Program_TAG instruction/command and Read_TAG instruction/command to the address shift register may become Program_TAG_INCR and Read_TAG_INCR, respectively, as would be understood by one skilled in the art.

In general, tag memory **404** may be used with a basic instruction set for a user to perform the desired functions for tag memory **404**. For example, the instruction set may include READ_TAG, ERASE_TAG, PROG_TAG, VERIFY_TAG, AND TAG_ENABLE instructions for reading, erasing, programming, verifying, and enabling (programming, reading, and verification), respectively, of tag memory **404**, as would be understood by one skilled in the art. Tag memory **404** may be accessed, as discussed herein, via a dedicated SPI interface (data port **112(1)**) and by an optional JTAG port (data port **112(2)**). The dedicated SPI interface, for example, allows a user to access tag memory **404** regardless of whether the PLD is programmed. Thus for example, by providing an SPI compliant interface, a user may access tag memory **404** as desired to program, read, and/or erase tag memory **404**.

FIG. **10** shows a block diagram of a non-volatile memory **1000**, which illustrates exemplary implementation details for non-volatile memory **106** of PLD **100** of FIG. **1** in accordance with an embodiment of the present invention. Non-volatile memory **1000** includes configuration flash portions **310**, one or more rows of tag memory **404** (shown as sections **404(1)** through **404(3)**), and user flash portion **304**. Tag memory **404** may have one or more rows and columns, with tag memory **404** scalable with PLD density (e.g., 448 bits to 3,608 bits or more of memory).

Non-volatile memory **1000** may further include one or more additional sections **1002**, **1004**, and **1006** of flash memory for storing information. For example, section **1002** may represent one or more rows of flash memory for storing security information (e.g., security bits) and user electronic signatures (e.g., user security or identifiable electronic codes) and other related user information. Similarly, section **1004** may represent one or more rows of flash memory for storing trim data (e.g., represents trim portion **306**) and test information (e.g., represents test portion **308**), while section **1006** may represent one or more rows of flash memory for storing various other information as desired by a user and/or the PLD manufacturer.

In general, systems and methods are disclosed herein to provide a flexible tag memory architecture for PLDs. For example, in accordance with an embodiment of the present invention, a PLD is disclosed having an independent program, read, and erase capability via a dedicated SPI interface for the tag memory to provide immediate sequential access to optimize die size and minimize costs.

Embodiments described above illustrated but do not limit the invention. It should also be understood that numerous modifications and variations are possible in accordance with the principles of the present invention. Accordingly, the scope of the invention is defined only by the following claims.

What is claimed is:

1. A programmable logic device comprising:
 - a plurality of logic blocks;
 - a plurality of input/output blocks;
 - configuration memory adapted to store configuration data for configuration of the logic blocks and the input/output blocks of the programmable logic device;
 - a first non-volatile memory adapted to store user information besides configuration data;
 - a first port having a dedicated serial peripheral interface to provide access to the first non-volatile memory;
 - a second non-volatile memory adapted to store configuration data for transfer to the configuration memory;
 - a volatile memory adapted to store data within the programmable logic device; and
 - a third non-volatile memory adapted to store data provided from the volatile memory.
2. The programmable logic device of claim **1**, wherein the first non-volatile memory and the second non-volatile memory are reprogrammable; and wherein the programmable logic device further comprises:
 - an interface circuit adapted to communicate signals between the first port and the first non-volatile memory, the second non-volatile memory, and the configuration memory.
3. The programmable logic device of claim **1**, further comprising:
 - an interface circuit adapted to communicate signals between the first port and at least one of the first non-volatile memory, the second non-volatile memory, and the configuration memory; and
 - a multiplexer adapted to selectively transfer signals between the first port and the interface circuit and between user logic within the programmable logic device and the interface circuit.
4. The programmable logic device of claim **1**, further comprising:
 - an interface circuit adapted to communicate signals between the first port and at least one of the first non-volatile memory, the second non-volatile memory, and the configuration memory;
 - a multiplexer adapted to selectively transfer signals between the first port and the interface circuit and between user logic within the programmable logic device and the interface circuit;
 - a second data port adapted to provide a JTAG interface to communicate signals between the second data port and the interface circuit; and
 - wherein the second data port further comprises a JTAG engine and the first data port further comprises a serial peripheral interface engine.
5. The programmable logic device of claim **1**, wherein the first, second, and third non-volatile memory are formed as part of a single block of reprogrammable non-volatile memory.
6. The programmable logic device of claim **1**, wherein the first, second, and third non-volatile memory are formed as part of a single block of non-volatile memory.
7. The programmable logic device of claim **1**, wherein the first, second, and third non-volatile memory are formed as part of a single block of non-volatile memory, and further comprising means for programming and reading the first, second, and third non-volatile memory.
8. The programmable logic device of claim **1**, wherein the volatile memory is further adapted to function as virtual flash memory, with the third non-volatile memory accessed via the volatile memory.

15

9. The programmable logic device of claim 1, further comprising:

control logic adapted to control transfer of data from the volatile memory to the third non-volatile memory and from the second non-volatile memory to the volatile memory.

10. A programmable logic device comprising:

a plurality of logic blocks;

configuration memory adapted to store configuration data for configuration of the logic blocks;

a first means for storing in a non-volatile manner user information other than configuration data;

means independent of the configuration memory for providing a serial peripheral interface to access the first storing means;

a second means for storing in a non-volatile manner configuration data for transfer to the configuration memory;

means for controlling transfer of configuration data from the second storing means to the configuration memory;

a volatile memory adapted to store data within the programmable logic device; and

a third means for storing in a non-volatile manner data provided from the volatile memory.

11. The programmable logic device of claim 10, wherein the first and second storing means are reprogrammable; and wherein the providing means further provides access to the second storing means and the configuration memory.

12. The programmable logic device of claim 10, wherein the providing means further provides access to the second storing means and the configuration memory; and

wherein the providing means further comprises selecting between signals from an external device and signals generated from user logic within the programmable logic device for accessing the first storing means, the second storing means, and the configuration memory.

13. The programmable logic device of claim 10, wherein the providing means further provides access to the second storing means and the configuration memory; and

16

means for providing a JTAG interface to access the first storing means, the second storing means, and the configuration memory.

14. The programmable logic device of claim 10, wherein the first, second, and third storing means are reprogrammable.

15. The programmable logic device of claim 10, wherein the volatile memory is further adapted to function as virtual flash memory, with the third storing means accessed via the volatile memory.

16. A method of accessing information stored in non-volatile memory of a programmable logic device, the method comprising:

providing configuration memory for storing configuration data for configuring the programmable logic device;

partitioning a first portion of the non-volatile memory to store configuration data for transfer to the configuration memory;

partitioning a second portion of the non-volatile memory to store information other than configuration data;

providing a dedicated serial peripheral interface for accessing the first and second portions;

providing a volatile memory block;

partitioning a third portion of the non-volatile memory to store information from the volatile memory block; and

controlling transfer of configuration data from the first portion to the configuration memory and transfer of information between the volatile memory block and the third portion.

17. The method of claim 16, wherein the serial peripheral interface is further adapted to access the third portion.

18. The method of claim 16, further comprising providing a selection circuit for selecting between external signals and internal signals for accessing the first and second portions.

19. The method of claim 18, further comprising programming a fuse to control the selecting.

20. The method of claim 16, further comprising providing a JTAG interface for accessing the first and second portions, wherein the first and second portions are reprogrammable.

* * * * *